

TRENDING

Helldivers 2

Windows 11 24H2

Upcoming PC games

Microsoft Copilot

Minecraft

Best Laptops with Numberpads

When you purchase through links on our site, we may earn an affiliate commission. [Here's how it works.](#)

[Software Apps](#) > [Windows 10](#)

# How to convert MBR to GPT drive to switch BIOS to UEFI on Windows 10

How-to

By [Mauro Huculak](#) published March 16, 2022

A PC with UEFI is more secure and faster than the legacy one using BIOS, and here's how to switch.



Advertisement

Windows Central CLOSE ✕

How To Batch Rename Fil...

PLAY SOUND

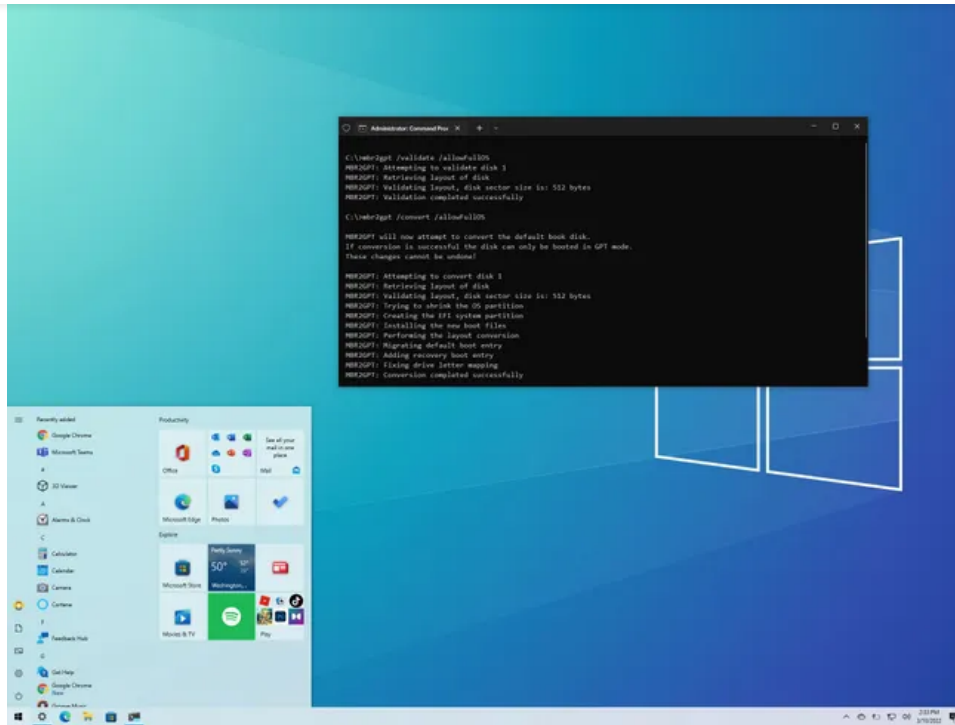
00:36



Hybrid bez kompromisov

Lexus

Otvorit



Convert MBR to GPT on Windows 10 (Image credit: Windows Central)

When you want to switch firmware type from the Basic Input/Output System (BIOS) to Unified Extensible Firmware Interface (UEFI) without modifying the current installation or deleting the data stored on the drive, or you plan to [upgrade Windows 10 to Windows 11](#), you can convert the drive using a Master Boot Record (MBR) to a GUID Partition Table (GPT) partition style using the "MBR2GPT" tool.

**BIOS** is a piece of code that resides on the motherboard that connects the hardware and software. This code has been around for a long time, and while it worked well, it was never designed for modern hardware, and it had many limitations, including limitations to partitions smaller than 2TB.



unlocks new security features available on [Windows 11](#) and Windows 10. For instance, "Secure Boot" is a feature that can protect a device's startup process from malicious programs, and now it's a prerequisite to install Windows 11. "Device Guard" gives you more advanced controls for app access, and "Credential Guard" can help prevent pass-the-hash attacks.

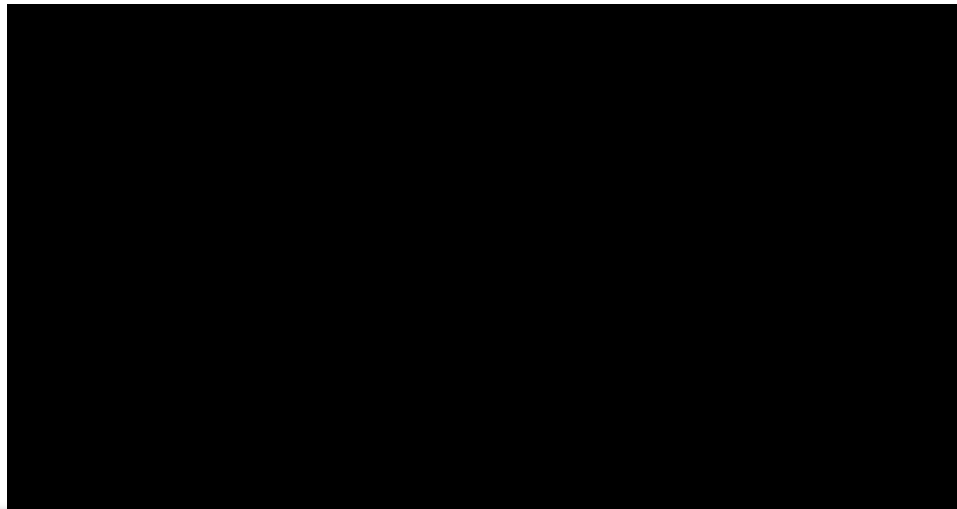
Sponsored Links

## Nový Lexus RX 350h Hybrid

Lexus

In this Windows 10 guide, we will walk you through the steps and information to use the Microsoft MBR2GPT command-line tool to convert a drive from MBR to GPT partition style, to switch from BIOS to UEFI mode on your device, and enable Secure Boot correctly.

### RECOMMENDED VIDEOS FOR YOU...



- [How to change the firmware mode from BIOS to UEFI](#)

**Warning:** This is a non-destructive process, but it's still recommended to make a full backup of your PC before proceeding in case something goes wrong and you need to recover your setup.

## How to convert a drive from MBR to GPT on Windows 10

Unlike older methods requiring a backup of your data and reinstalling Windows, the MBR2GPT tool makes it easy to change the partition style quickly. When using this tool, the conversion process adds the GPT components to the MBR partition without modifying the existing partition and maintaining the data untouched.

The best approach is switching to UEFI and performing a clean install of Windows 11. However, if you already have a Windows 10 installation that you want to upgrade, you can convert the drive to change the system firmware settings properly. Otherwise, the device will no longer start correctly.

## Check MBR or GPT partition style

Before making system changes, check the current settings to see whether the system is set to MBR or GPT using these steps:

1. Open **Start**.
2. Search for **Disk Management** and click the top result to open the experience.
3. Right-click the drive (where Windows 10 resides) and select the **Properties** option.

**3 For less than 50 cents per game, you can grab an Xbox Series S and 3 months of Game Pass Ultimate**

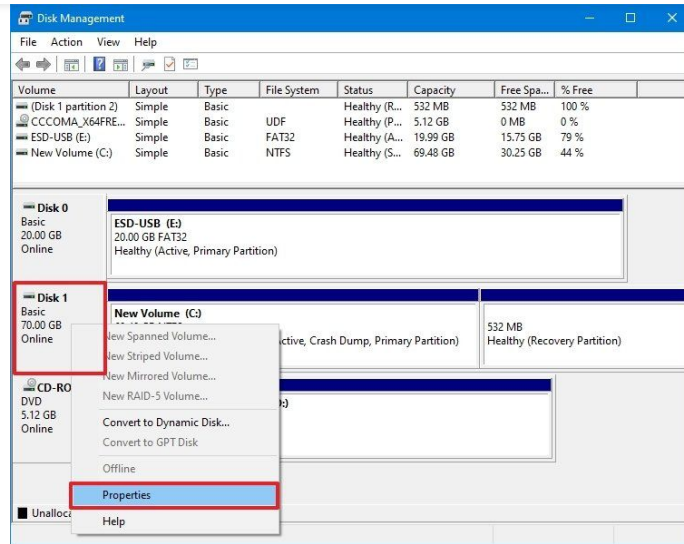
**4 Microsoft is forcefully auto-upgrading 'eligible' users running older versions of Windows 11 to 23H2 ahead of 'Moment 5'**

**5 The best Wi-Fi 6 mesh router I've ever tested is discounted to an all-time low, and it STILL powers my home network two years later**

Advertisement



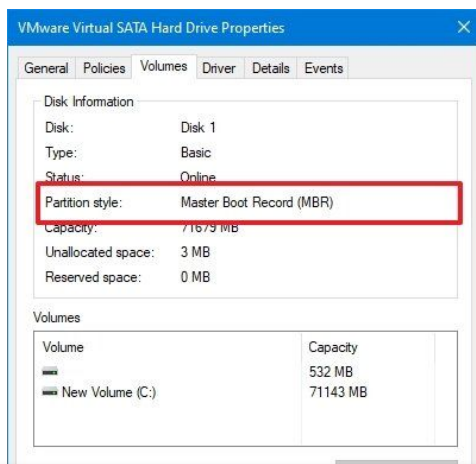




Source: Windows Central (Image credit: Source: Windows Central)

4. Click on the **Volumes** tab.

5. Under the "Partition style" field, if the field reads **GUID Partition Table (GPT)**, the drive does not need conversion, but if you see the **Master Boot Record (MBR)** label, you will need to use the conversion tool.



6. Click the **Cancel** button.

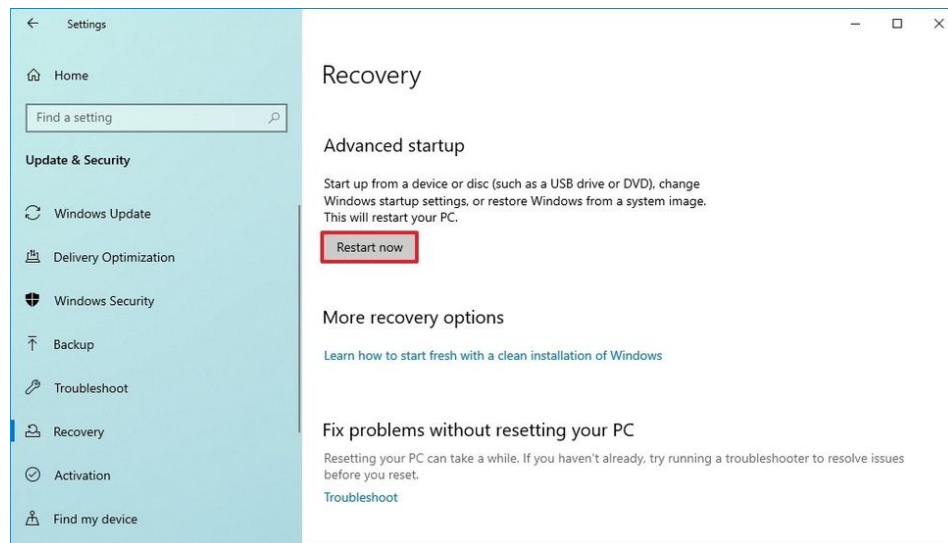
Once you complete the steps, you can change the partition style on the computer.

Also, if you need to change the partition, check your device manufacturer's support website to find out whether the hardware includes support for UEFI before using these instructions.

## Convert MBR to GPT partition style (offline)

To convert a drive using MBR to GPT on Windows 10, use these steps:

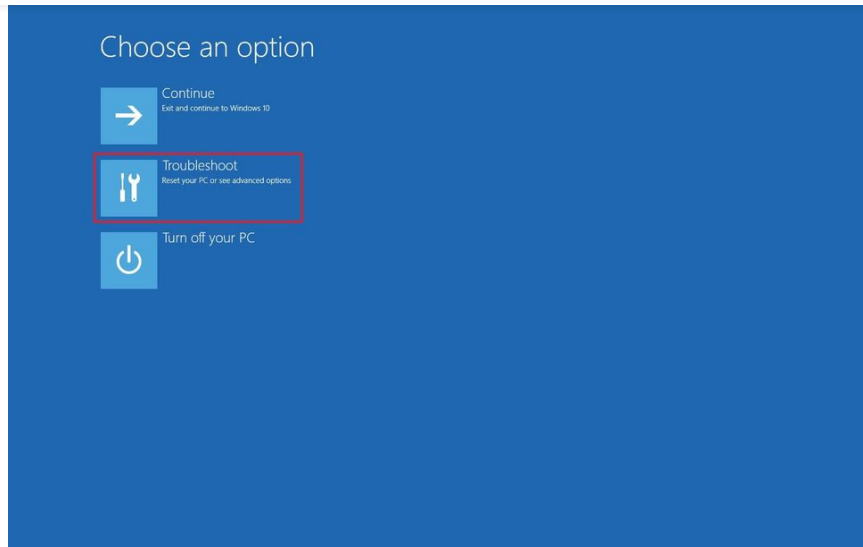
1. Open **Settings**.
2. Click on **Update & Security**.
3. Click on **Recovery**.
4. Under the "Advanced startup" section, click the **Restart now** button.



Source: Windows Central (Image credit: Source: Windows Central)

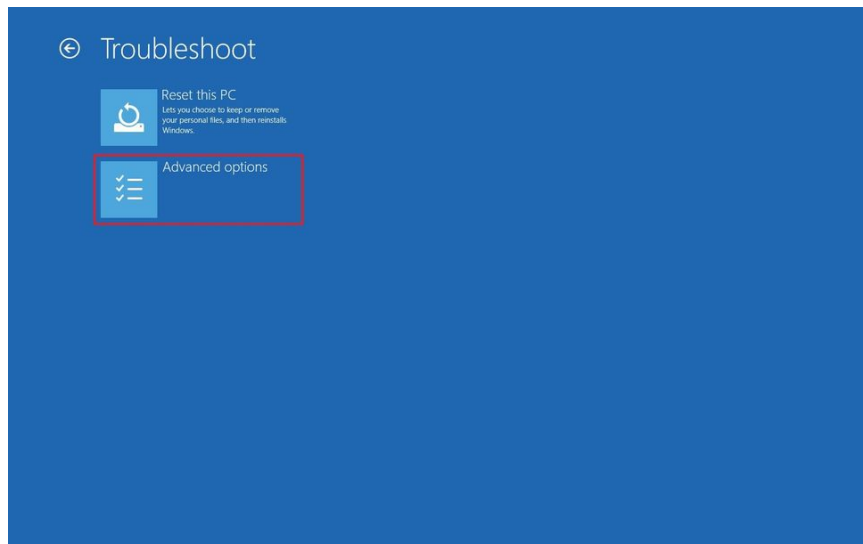
Advertisement





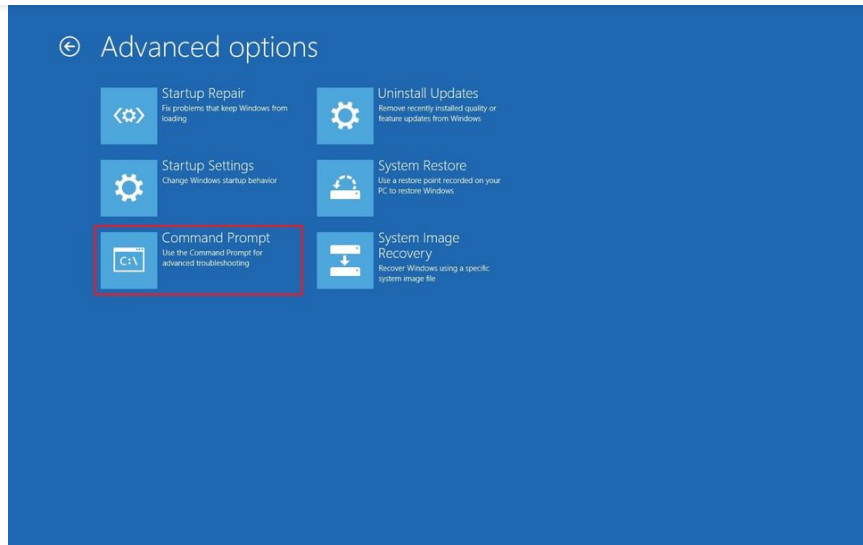
Source: Windows Central (Image credit: Source: Windows Central)

6. Click on **Advanced options**.



Source: Windows Central (Image credit: Source: Windows Central)

An advertisement for the new Lexus RX 350h Hybrid. The top part shows the text "Nový Lexus RX 350h Hybrid" in bold black font. Below it, there is a smaller text in Czech: "Využijte výhodnou cenovou ponuku a dostupnost nového Lexus RX 350h Hybrid". Below the text is a grey bar with the word "Advertisement". At the bottom, there is a video player interface for Windows Central. The video title is "How To Batch Rename Fil...". The player has a play button, a volume icon, and a "PLAY SOUND" button. The video duration is 00:36. There are also icons for a grid, settings, and a share icon.



Source: Windows Central (Image credit: Source: Windows Central)

8. Select your administrator account and sign in (if applicable).

9. Type the following command to validate the drive's requirements and press **Enter**: `mbr2gpt /validate`**Quick tip:** The `mbr2gpt.exe` is located in the "System32" folder inside the "Windows" folder. If you want to see all the available options, use the `mbr2gpt /?` command.

```
Administrator: X:\windows\system32\cmd.exe
Microsoft Windows [Version 10.0.17763.1]
(c) 2018 Microsoft Corporation. All rights reserved.

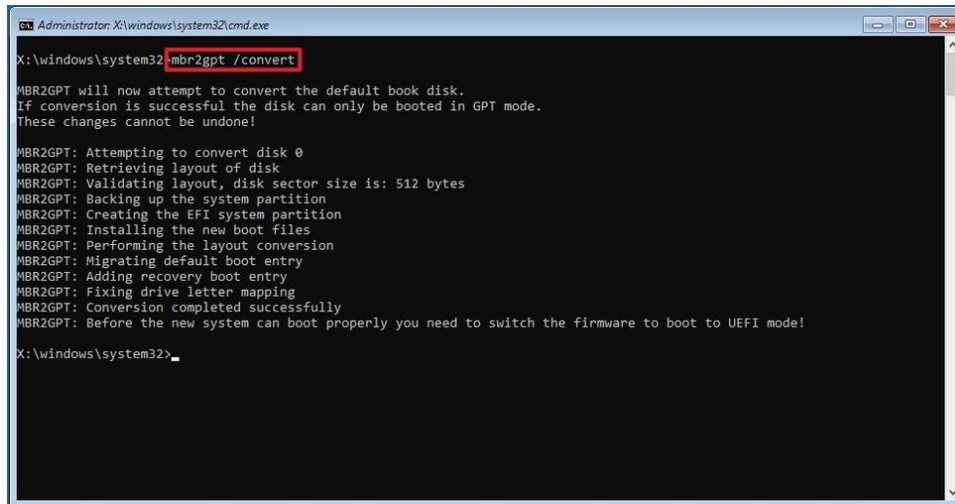
X:\windows\system32>mbr2gpt /validate
MBR2GPT: Attempting to validate disk 0
MBR2GPT: Retrieving layout of disk
MBR2GPT: Validating layout, disk sector size is: 512 bytes
MBR2GPT: Validation completed successfully

X:\windows\system32>_
```



Source: Windows Central (Image credit: Source: Windows Central)

10. Type the following command to convert the drive from MBR to GPT and press **Enter**: `mbr2gpt /convert`



```
Administrator: X:\windows\system32\cmd.exe
X:\windows\system32> mbr2gpt /convert
MBR2GPT will now attempt to convert the default boot disk.
If conversion is successful the disk can only be booted in GPT mode.
These changes cannot be undone!

MBR2GPT: Attempting to convert disk 0
MBR2GPT: Retrieving layout of disk
MBR2GPT: Validating layout, disk sector size is: 512 bytes
MBR2GPT: Backing up the system partition
MBR2GPT: Creating the EFI system partition
MBR2GPT: Installing the new boot files
MBR2GPT: Performing the layout conversion
MBR2GPT: Migrating default boot entry
MBR2GPT: Adding recovery boot entry
MBR2GPT: Fixing drive letter mapping
MBR2GPT: Conversion completed successfully
MBR2GPT: Before the new system can boot properly you need to switch the firmware to boot to UEFI mode!

X:\windows\system32>_
```

Source: Windows Central (Image credit: Source: Windows Central)

11. Click the **Close** button.
12. Click the **Turn off your PC** option.

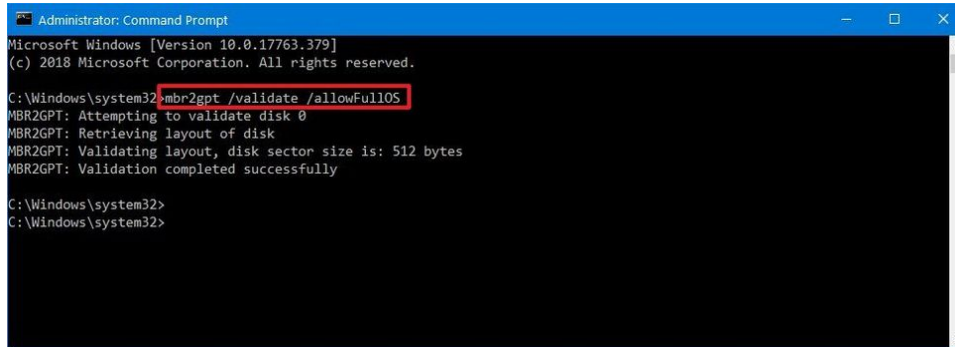
After you complete the steps, the tool will validate the drive and create an EFI system partition (ESP). The process will also insert the UEFI boot files and GPT components into the partition. The tool will update the Boot Configuration Data (BCD), and the previous drive letter will be added to the drive.

## Convert MBR to GPT partition style (online)

It's always recommended to use the MBR2GPT tool offline to avoid



1. Open **Start**.
2. Search for **Command Prompt**, right-click the top result, and select the **Run as administrator** option.
3. Type the following command to validate the drive and press **Enter**:`mbr2gpt /validate /allowFullIOS`



```
Administrator: Command Prompt
Microsoft Windows [Version 10.0.17763.379]
(c) 2018 Microsoft Corporation. All rights reserved.

C:\Windows\system32>mbr2gpt /validate /allowFullIOS
MBR2GPT: Attempting to validate disk 0
MBR2GPT: Retrieving layout of disk
MBR2GPT: Validating layout, disk sector size is: 512 bytes
MBR2GPT: Validation completed successfully

C:\Windows\system32>
C:\Windows\system32>
```

Source: Windows Central (Image credit: Source: Windows Central)

4. Type the following command to convert the drive to GPT and press **Enter**:`mbr2gpt /convert /allowFullIOS`



```

Administrator: Command Prompt
C:\Windows\system32> mbr2gpt /convert /allowFullOS

MBR2GPT will now attempt to convert the default boot disk.
If conversion is successful the disk can only be booted in GPT mode.
These changes cannot be undone!

MBR2GPT: Attempting to convert disk 0
MBR2GPT: Retrieving layout of disk
MBR2GPT: Validating layout, disk sector size is: 512 bytes
MBR2GPT: Trying to shrink the OS partition
MBR2GPT: Creating the EFI system partition
MBR2GPT: Installing the new boot files
MBR2GPT: Performing the layout conversion
MBR2GPT: Migrating default boot entry
MBR2GPT: Adding recovery boot entry
MBR2GPT: Fixing drive letter mapping
MBR2GPT: Conversion completed successfully
MBR2GPT: Before the new system can boot properly you need to switch the firmware to boot to UEFI mode!

C:\Windows\system32>

```

Source: Windows Central (Image credit: Source: Windows Central)

Once you complete the steps, the command-line tool will reduce the size of the primary partition and change it from MBR to GPT.

## MBR2GPT return codes

If the processes are completed successfully, the return code would be "0," but if the process fails, you may see one of the 11 error codes:

Swipe to scroll horizontally



Return code	Description
1	User canceled the conversion.
2	Internal error.
3	Initialization error.

The advertisement features a video player from Windows Central. The video title is "How To Batch Rename Fil...". The player includes a play button, a volume icon, and a "PLAY SOUND" button. The video progress is shown as 00:36. The background of the ad is a blue sky with trees and the text "ÚPLNE NOVÝ TOURNEO COURIER".

Return code	Description
6	One or more volumes on the disk are encrypted.
7	Geometry and layout of the disk don't meet requirements.
8	Error while creating the EFI system partition.
9	Error installing boot files.
10	Error while applying GPT layout.
100	Successful conversion, but some boot configuration data didn't restore.

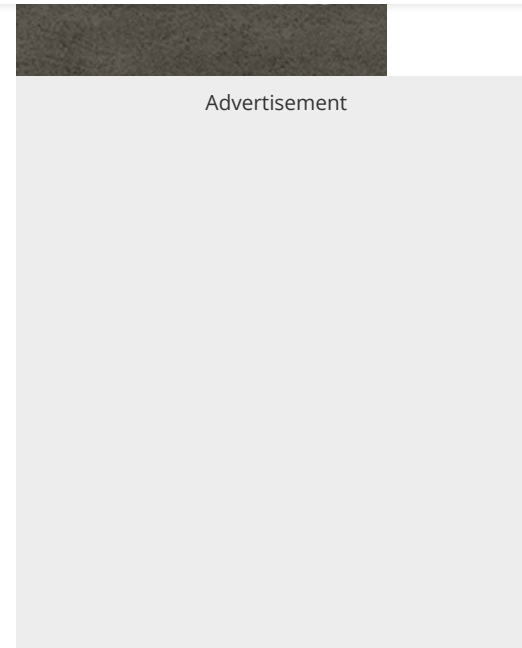
## MBR2GPT important details

You can use the MBR2GPT tool on a traditional hard drive (HDD), solid-state drive (SSD), or an M.2 drive with virtually any version of Windows 10, but you must run the tool from a Windows 10 (version 1703 or later) installation.

When dealing with a [drive using file encryption with BitLocker](#), you must first suspend the encryption before following the outlined instructions.

While MBR-style drives can have up to four primary partitions, the drive you want to convert can't have more than three partitions because one additional allocation is required to create the UEFI partition.

Finally, Microsoft designed the tool to convert drives running Windows 8.1, 7, or from an older version, but you can always upgrade the installation to the latest release of Windows 10 and then use the tool to convert from MBR to GPT.





After converting the drive to the GPT style, the computer will no longer start until you change the firmware type from BIOS to UEFI in the motherboard.

Typically, this process requires hitting one of the function keys (F1, F2, F3, F10, or F12), Esc, or Delete key as soon as you start the device. However, since these options are always different, it's best to check your device manufacturer's support website for more specific details.

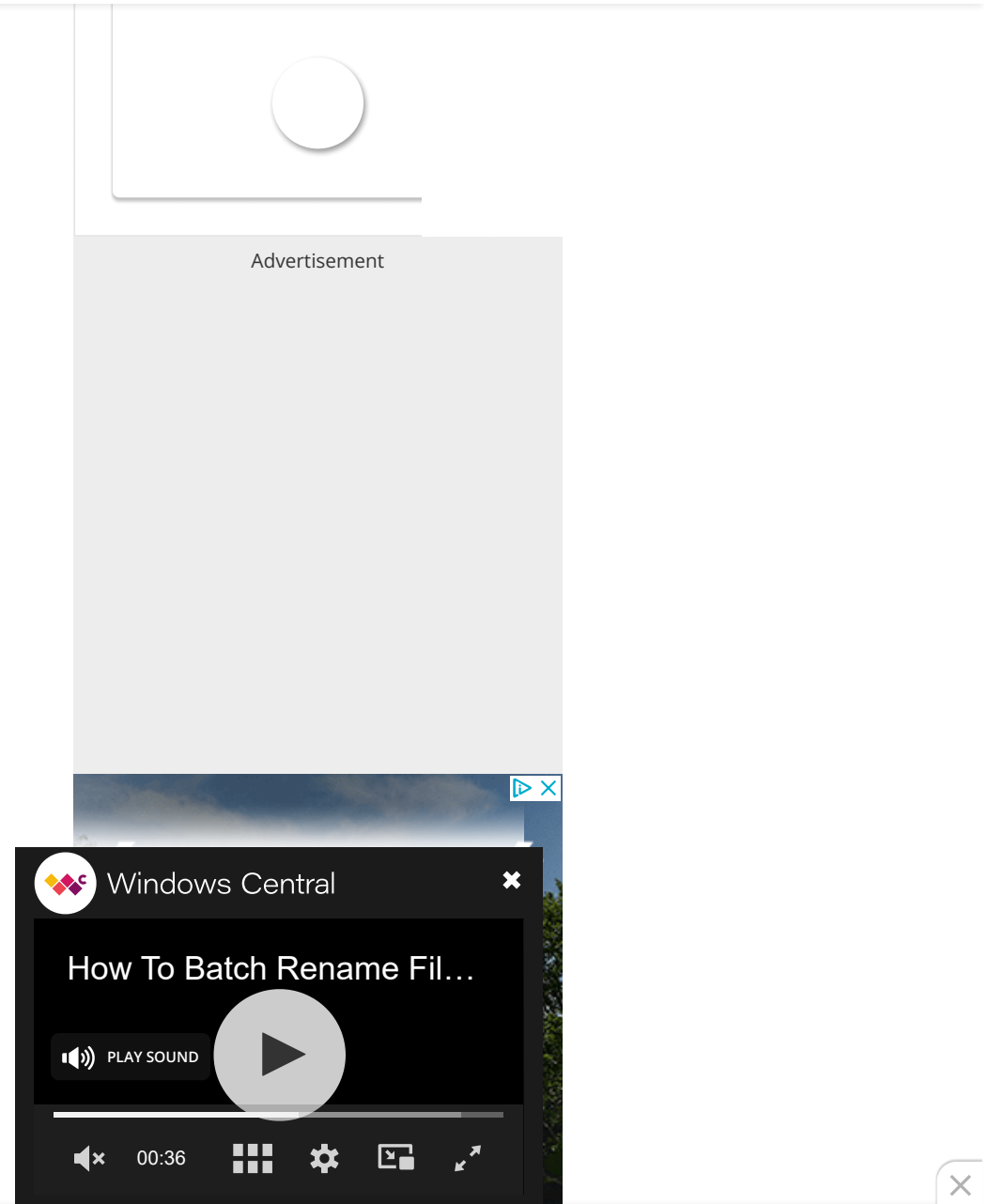
On the firmware interface, find the "Boot" menu, enable the UEFI option, save the changes, and then the computer should start normally.

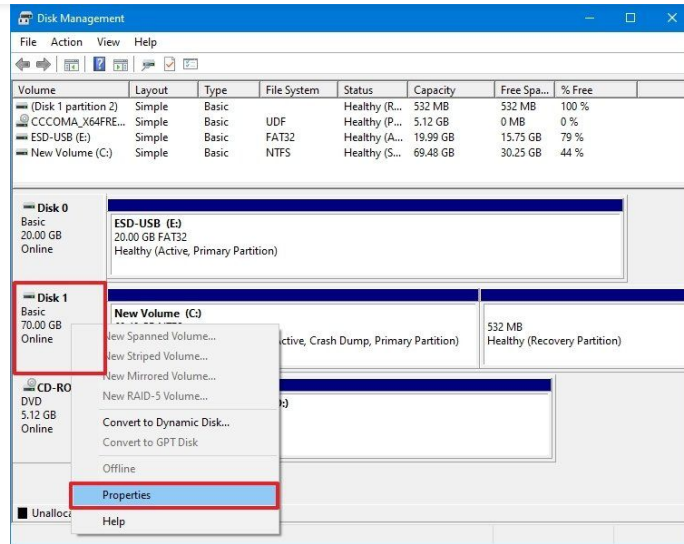
Also, if you plan to upgrade the device to Windows 11 while in the UEFI settings, open the boot or security settings page, make sure to enable the "Secure Boot" option, and exit the firmware saving the changes.

## Check GPT partition style

To confirm the device is using a GPT partition style, use these steps:

1. Open **Start**.
2. Search for **Disk Management** and click the top result to open the app.
3. Right-click the main drive and select the **Properties** option.

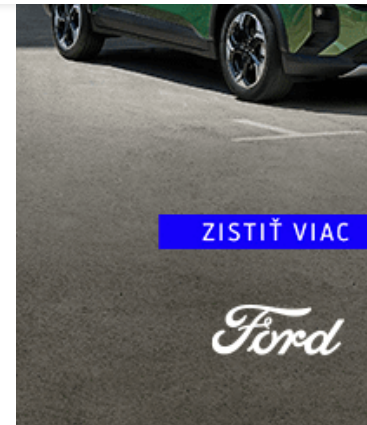
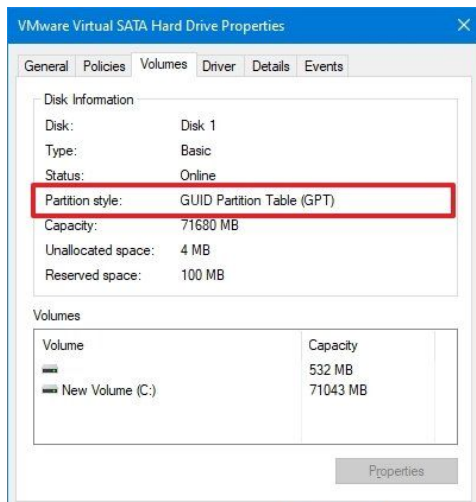




Source: Windows Central (Image credit: Source: Windows Central)

4. Click on the **Volumes** tab.

5. Under the "Partition style" field, the information should now read **GUID Partition Table (GPT)**.



Advertisement

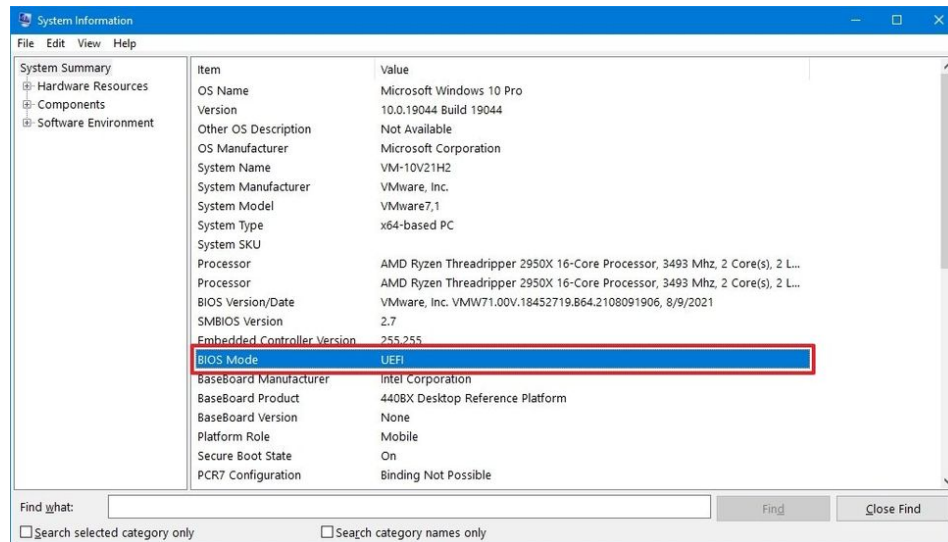


After you complete the steps, if the partition is running using the correct partition style, you only need to check whether the device uses the UEFI firmware mode.

## Check UEFI firmware

To confirm the computer is in UEFI mode and Secure Boot is turned on, use these steps:

1. Open **Start**.
2. Search for **msinfo32** and click the top result to open the **System Information** app.
3. Click on **System Summary** on the left pane.
4. Check the "BIOS Mode," which now should read **UEFI**.



Source: Windows Central (Image credit: Source: Windows Central)

5. Check the "Secure Boot State" information, which now should read **On**.



## More Windows resources

For more helpful articles, coverage, and answers to common questions about Windows 10 and Windows 11, visit the following resources:

- [Windows 11 on Windows Central — All you need to know](#)
- [Windows 11 help, tips, and tricks](#)
- [Windows 10 on Windows Central — All you need to know](#)

## Get the Windows Central Newsletter

All the latest news, reviews, and guides for Windows and Xbox diehards.

- Contact me with news and offers from other Future brands
- Receive email from us on behalf of our trusted partners or sponsors

By submitting your information you agree to the [Terms & Conditions](#) and [Privacy Policy](#) and are aged 16 or over.



**Mauro Huculak**



IT background with professional certifications from Microsoft, Cisco, and CompTIA, and he's a recognized member of the Microsoft MVP community.

CATEGORIES

WINDOWS 10

SOFTWARE APPS

Recommended:

Next Article

[Software Apps](#) > [Windows 11](#)

## What's Do Not Track, and how do you enable it on your Windows 11 web browser?

How-to By [Mauro Huculak](#) published 16 February 2024

You can make your browser more private with a one-single option.







refers to those services that collect information to understand you and show targeted ads. **Fingerprinting** is a more advanced tactic that gathers information about your device to create a unique identifier, making it harder to clear your browsing data to prevent websites from still knowing you. Then there's also **IP tracking** and **behavioral tracking**.

When the "Do Not Track" privacy feature is turned on, the browser sends a "Do Not Track" header with every web request, letting websites and services know that you refuse to get tracked online. The only caveat is that the DNT is not a foolproof solution, since websites and services are not obligated to respect requests. While some may comply, many others disregard it.

Also, it's important to note that DNT mainly focuses on third-party trackers, not the websites you visit directly. They can still collect your browsing history within their domain. The bottom line is that there's no harm in turning this feature on your browser as it will, at some level, improve your online privacy.

In this [how-to guide](#), I'll walk you through the steps to enable DNT on your browser on Windows 11.

### HOW TO ENABLE DNT ON MICROSOFT EDGE

To enable Do Not Track on Edge, use these steps:

1. Open **Microsoft Edge**.
2. Click the **Settings and more** (three dots) button.
3. Choose the **Settings** option.
4. Click on **Privacy, search, and services**.
5. Turn on the "Send **"Do Not Track requests"** toggle switch under the "Privacy" setting.





(Image credit: Mauro Huculak)

6. Click the **Send request** button.







(Image credit: Mauro Huculak)

## HOW TO ENABLE DNT ON GOOGLE CHROME

To enable Do Not Track on Chrome, use these steps:

1. Open **Google Chrome**.
2. Click the **Customize and control Google Chrome** (three dots) button.
3. Choose the **Settings** option.
4. Click on **Privacy and security**.
5. Click the "Third-party cookies" setting.





(Image credit: Mauro Huculak)

6. Turn on the "Send a Do Not Track request with your browsing traffic" toggle switch.





(Image credit: Mauro Huculak)

7. Click the **Confirm** button.





(Image credit: Mauro Huculak)

## HOW TO ENABLE DNT ON MOZILLA FIREFOX

To enable DNT on Firefox, use these steps:

1. Open **Mozilla Firefox**.
2. Click the **Open application menu** button from the top-right.
3. Choose the **Settings** option.
4. Click on **Privacy & Security**.
5. Check the "Send websites a Do Not Track request" option under the "Website Privacy Preferences" section.





(Image credit: Mauro Huculak)

5. Check the **"Send websites a Do Not Track request"** option under the "Website Privacy Preferences" section.

Once you complete the steps, the web browser will signal to websites that you don't want your online activities (such as browsing habits, preferences, and interactions with websites) to be tracked.

Alternatives and other measures:

- **Privacy-focused browsers:** Consider using browsers like DuckDuckGo or [Brave](#), which have stricter privacy settings and built-in tracking protection.
- **Anti-tracking extensions:** Use extensions like Ghostery or Privacy



- **Clearing browsing data:** Regularly clear your browsing history, cookies, and cache to minimize data collection.
- **Privacy-focused search engines:** Use search engines like DuckDuckGo that do not track your searches or collect personal information.

## More resources

For more helpful articles, coverage, and answers to common questions about Windows 10 and Windows 11, visit the following resources:

- [Windows 11 on Windows Central — All you need to know](#)
- [Windows 10 on Windows Central — All you need to know](#)

### Today's Best Windows 11 deals



\$99.99

VIEW DEAL



~~\$139~~  
\$123.94

VIEW DEAL



\$150.83

VIEW DEAL

SHOW MORE DEALS ▼

We check over 250 million products every day for the best prices





## Mauro Huculak

Mauro Huculak is technical writer for WindowsCentral.com. His primary focus is to write comprehensive how-tos to help users get the most out of Windows 10 and its many related technologies. He has an IT background with professional certifications from Microsoft, Cisco, and CompTIA, and he's a recognized member of the Microsoft MVP community.

### TOPICS

WINDOWS 11 HELP

WINDOWS 11

### CATEGORIES

WINDOWS 11

SOFTWARE APPS

## Hybrid bez kompromisov

Lexus | Sponsored

Taboola Feed

The video player interface includes a Windows Central logo in the top left corner and a close button in the top right. The video title is "How To Batch Rename Fil...". Below the title is a "PLAY SOUND" button with a speaker icon. A large play button is centered on the video. At the bottom, there is a progress bar showing "00:36" and several control icons: a mute icon, a grid icon, a settings gear icon, a full screen icon, and a refresh icon. A close button is also visible in the bottom right corner of the player area.

We help you pick the best free VPN service in 2023, explaining the pros, cons, and risks. Avoid VPN scams and get a free VPN for streaming Netflix.

## Killer New Subaru Crosstrek 2024 For Seniors - Prices May Blow You Away (Take A Look)

2024 Subaru Crosstrek Review, Pricing, and Specs

Subaru Crosstrek | Sponsored

Click Here

## The Smile You've Always Wanted with Dental Implants Might Be Closer than You Think

Dental Implants | Search Ads | Sponsored

Search Now





## TOPICS

WINDOWS 10 HELP

Windows Central is part of Future US Inc, an international media group at

A video player window from Windows Central. The title bar shows the Windows Central logo and the text 'Windows Central'. The video title is 'How To Batch Rename Fil...'. The player includes a play button, a volume icon with 'PLAY SOUND' text, a progress bar, and a time display of '00:36'. There are also icons for a grid, settings, a share icon, and a close button.

ite.

[Terms and conditions](#)

[Contact Future's experts](#)

[Privacy policy](#)

[Cookies policy](#)

[Accessibility statement](#)

[Careers](#)

[Licensing](#)

[About us](#)

[Newsletter](#)

[Advertising inquiries](#)

[Android Central](#)

[iMore](#)

[GDPR consent](#)

---

© Future US, Inc. Full 7th Floor, 130 West 42nd Street, New York, NY 10036.



Windows Central

### How To Batch Rename Fil...

PLAY SOUND

00:36